

FEBRUARY NEWSLETTER



DATES TO REMEMBER:

February 16th-22nd:
Winter Break- Rehoboth Studio Closed

Costumes:

A note about costumes...Costumes are beginning to arrive! When costumes are sent home, you will receive an email with instructions and a costume photo. All costumes have been tripled checked to be sure they include tights and a headpiece (if needed). We can not take costumes back after this time. Thank You!

Closings:

Winter Cancellations:

In the event the studio will be closed due to inclement weather, an email and text alert will be sent. Our website and Facebook pages will be also be updated promptly. Please check one hour prior to your scheduled class time for the most up to date information. There will be a make up options for cancelled classes.

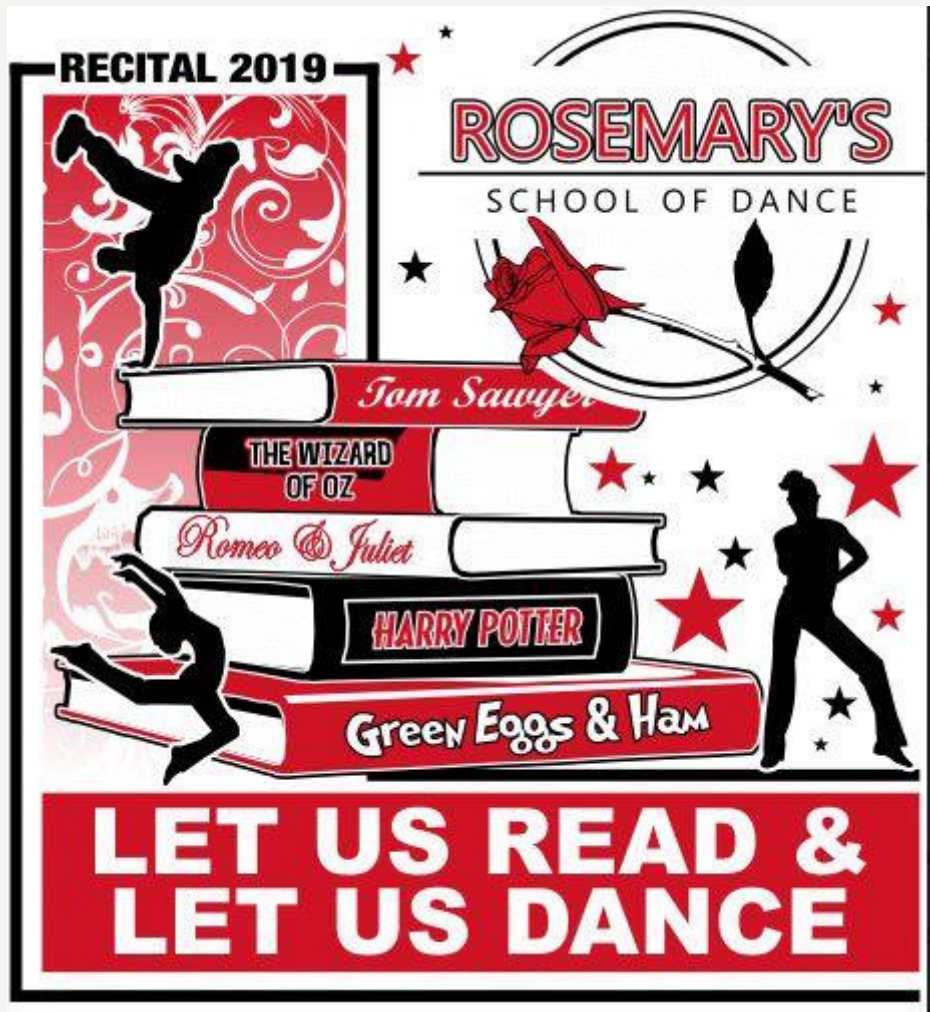


RECITAL 2019

Date: Saturday, June 29th- SHOW C

Place: Veterans Memorial Auditorium

Time: 5:00pm



A Few Friendly Reminders about the Waiting Room...

- The waiting area can be very busy at times. Please try to help students keep their bags and shoes in the cubby holes so chairs and bench area can be used by others who are waiting.
- The instruments in the Band Room are not property of RSDE. Please do not touch them and remind your children that they are not to be touched.
- We do have nut allergies at the studio. Please try to limit the snacks that are brought into the studio to nut-free snacks.
- **Please make sure to keep payment envelopes and copies of rsde materials out of young children hands. I do love the lovely pictures that are being left behind, but please help keep all drawings to just coloring pages or scrap paper. Thank You!**